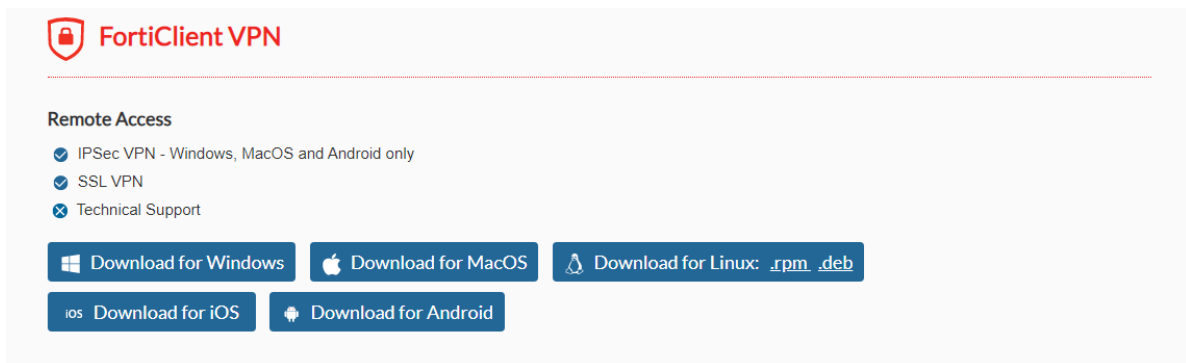
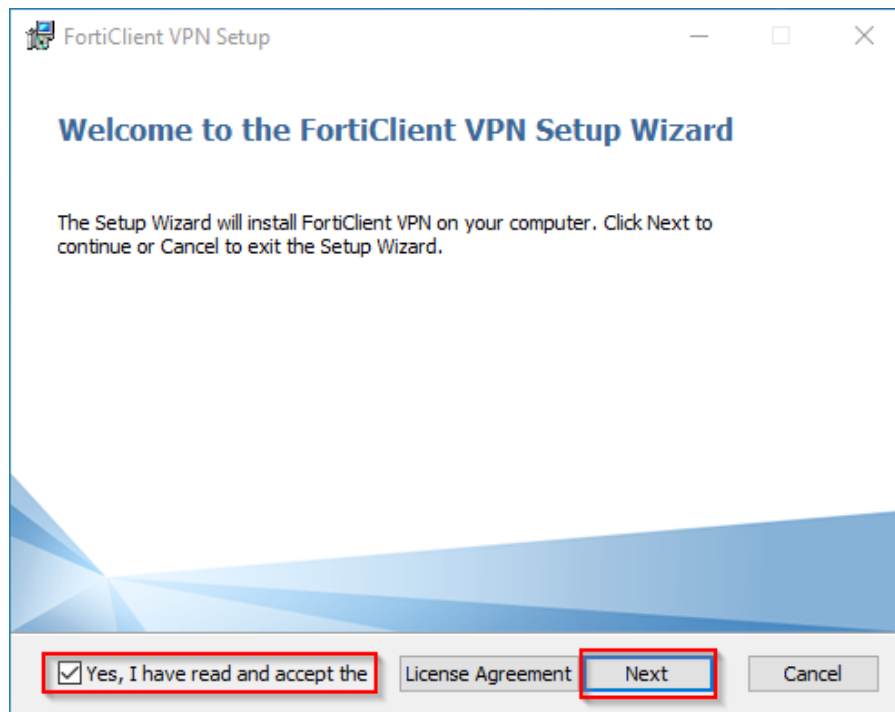


How to set up VPN for access to digital resources provided by MU's Library

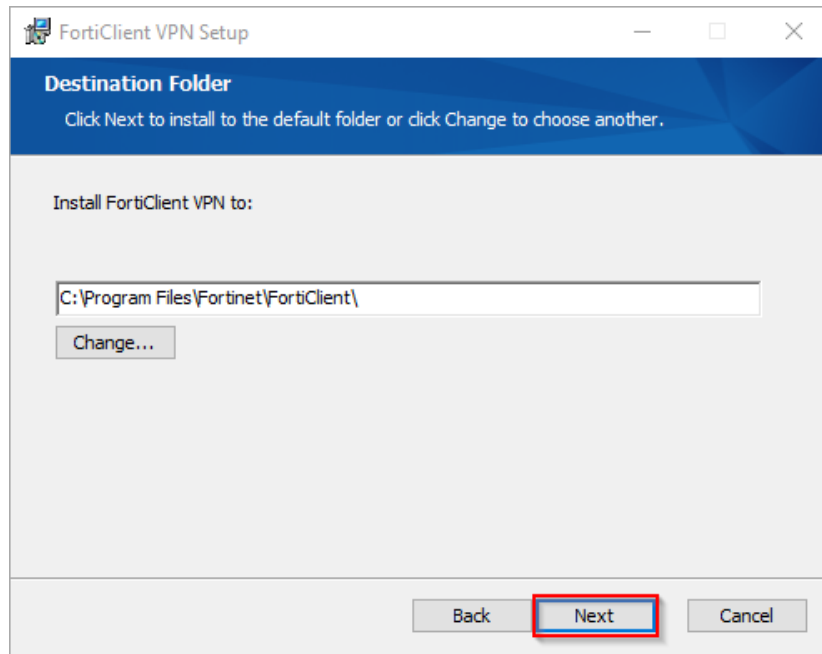
1. Download FortiClient VPN from URL:
 - a. Download for Windows:
https://filestore.fortinet.com/forticlient/downloads/FortiClientVPNOnlineInstaller_6.4.exe
 - b. Download for MacOS:
https://filestore.fortinet.com/forticlient/downloads/FortiClientVPNOnlineInstaller_6.4.dmg



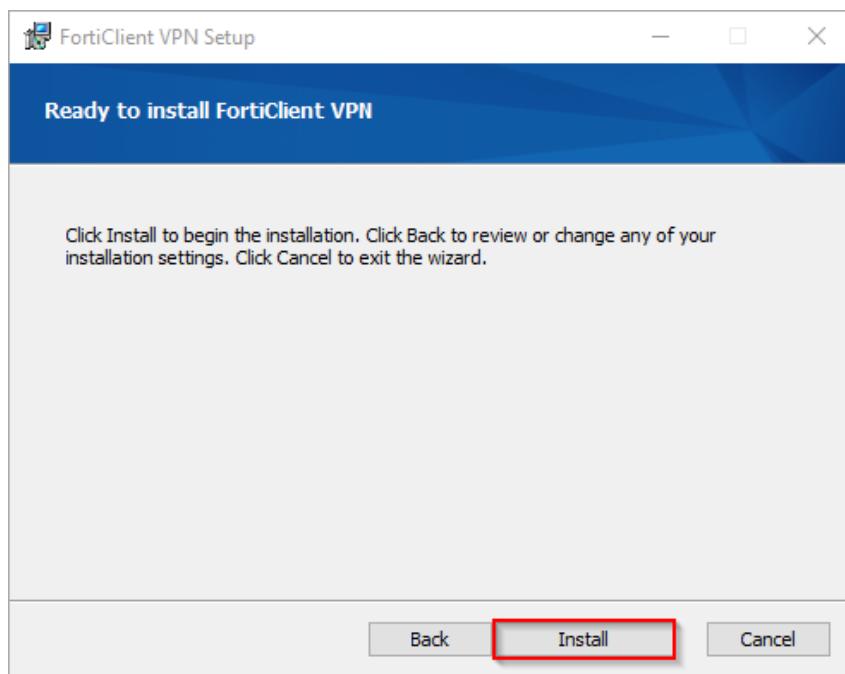
2. Install FortiClient on your device. Setup and click on *next*.



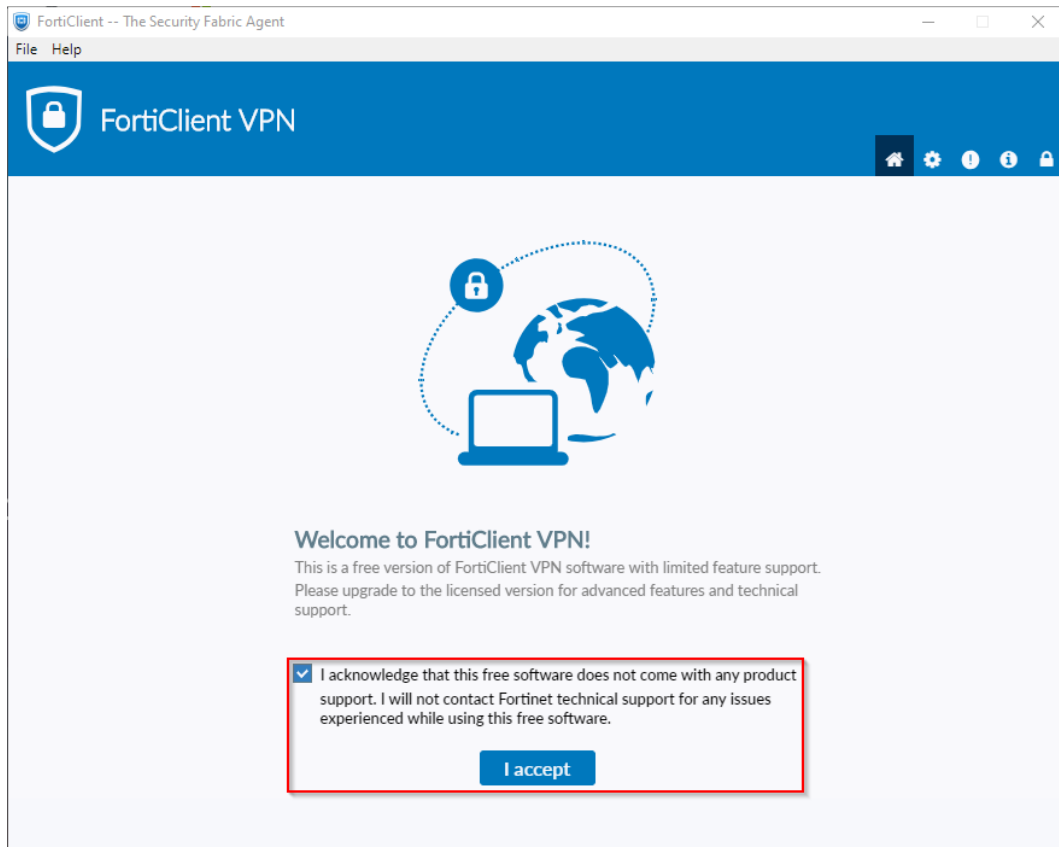
3. Keep the default installation path and click next.



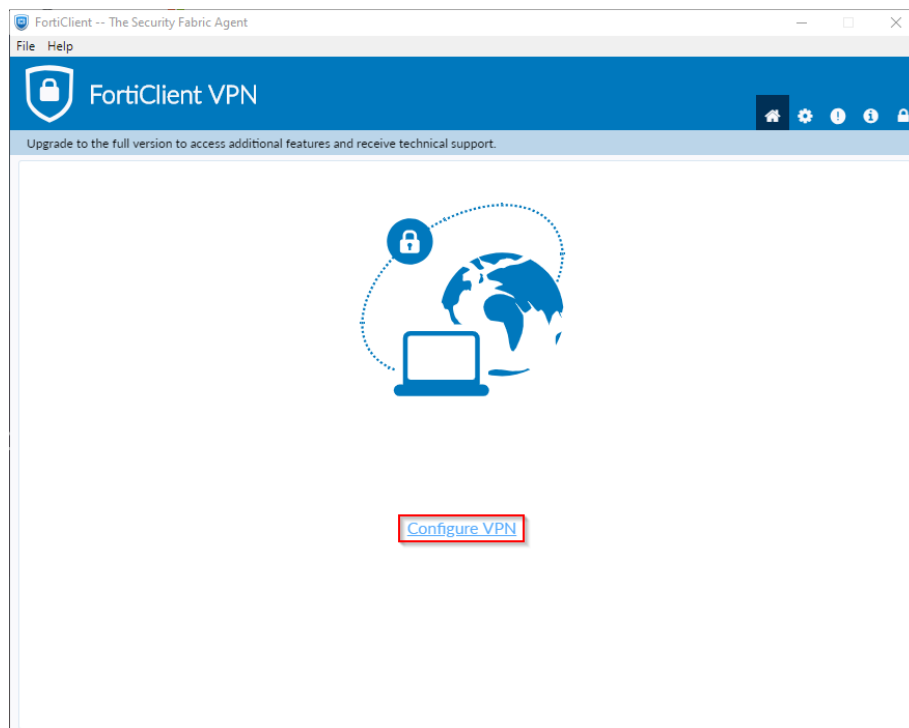
4. Click install.



- When you start FortiClient VPN, this window appears. You have to activate the checkbox and click on *"I accept"*.



6. After that click on *Configure VPN*.



7. Enter a name of your choice for this VPN connection, i.e. MUV, in the field **Connection Name**. Copy the following URL <https://vpn.modul.ac.at/students> in the **Remote Gateway** field. Please activate the checkbox **Customize port** and set the port **443**. Select **Save Login** in the Authentication section. Enter your **student id** in the field **User Name** and click on **Save**.

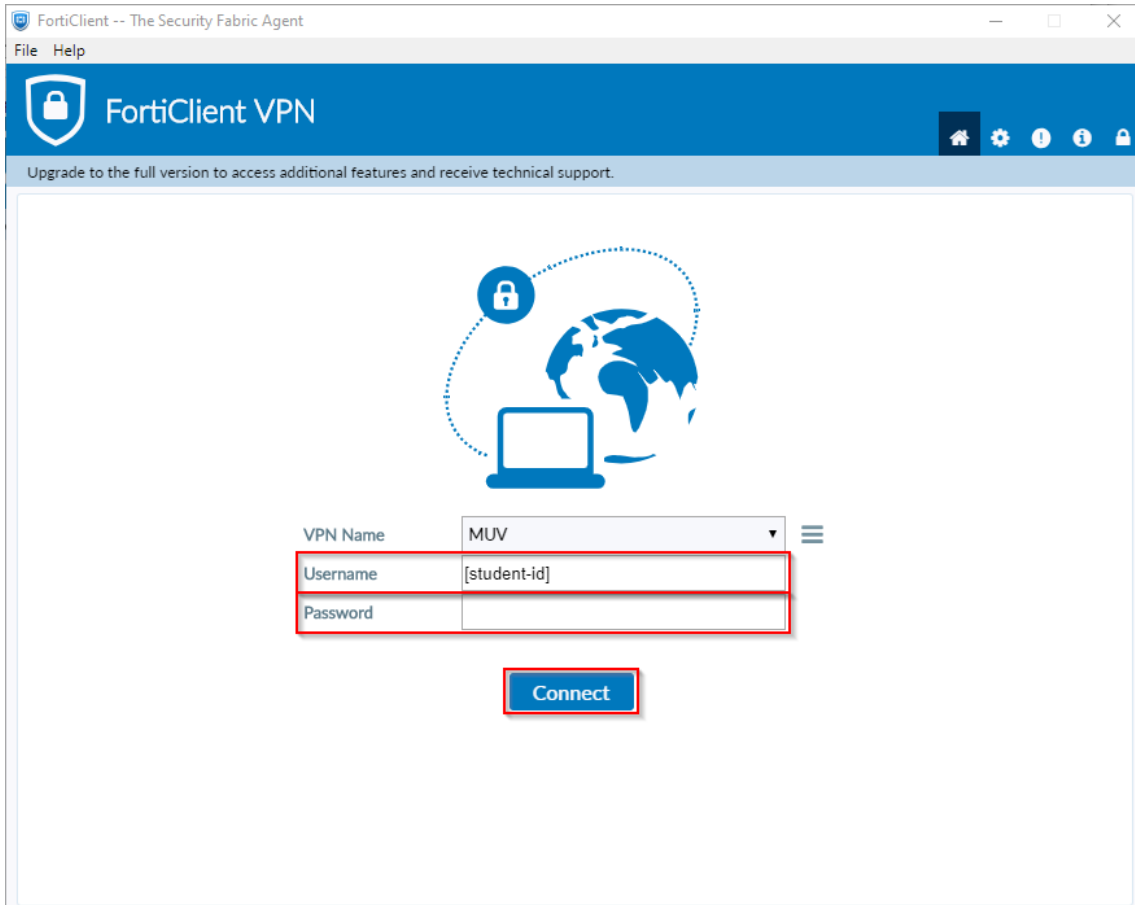
The screenshot shows the FortiClient VPN configuration window. The title bar reads "FortiClient -- The Security Fabric Agent". The main window has a blue header with the FortiClient VPN logo and a navigation bar with icons for home, settings, help, and lock. Below the header, there is a message: "Upgrade to the full version to access additional features and receive technical support." The main content area is titled "Edit VPN Connection" and contains several fields and options:

- VPN**: Three tabs are visible: "SSL-VPN" (selected), "IPsec VPN", and "XML".
- Connection Name**: A text box containing "MUV".
- Description**: An empty text box.
- Remote Gateway**: A text box containing "https://vpn.modul.ac.at/students".
- Add Remote Gateway**: A button with a plus sign.
- Customize port**: A checked checkbox next to a text box containing "443".
- Enable Single Sign On (SSO) for VPN Tunnel**: An unchecked checkbox.
- Client Certificate**: A dropdown menu set to "None".
- Authentication**: Two radio buttons: "Prompt on login" (unchecked) and "Save login" (checked).
- Username**: A text box containing "student-id".
- Do not Warn Invalid Server Certificate**: An unchecked checkbox.

At the bottom of the dialog, there are two buttons: "Cancel" and "Save".



8. Enter your **MU Email Password** in the *Password* field and click on *Connect*.



9. Well done! Now you should be connected to MU's network and able to access library resources off campus via <https://www.modul.ac.at/student-life/library>.

In case of any questions: As always contact support@modul.ac.at.