

How to set up VPN for access to digital resources provided by MU's library:

1. Download FortiClient VPN from URL:
 - a. Download for Windows:

<https://links.fortinet.com/forticlient/win/vpnagent>

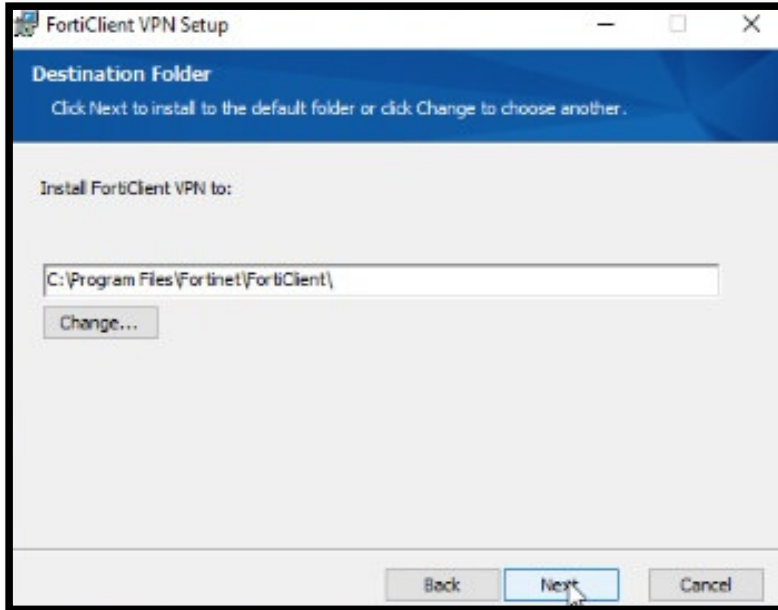
- b. Download for MacOS:

<https://links.fortinet.com/forticlient/mac/vpnagent>

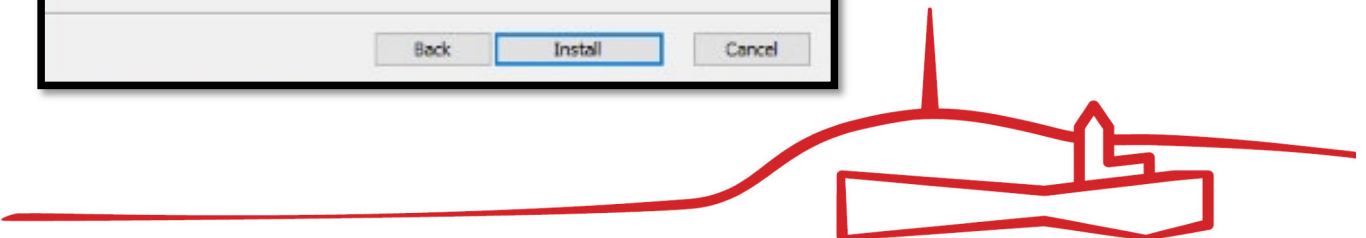
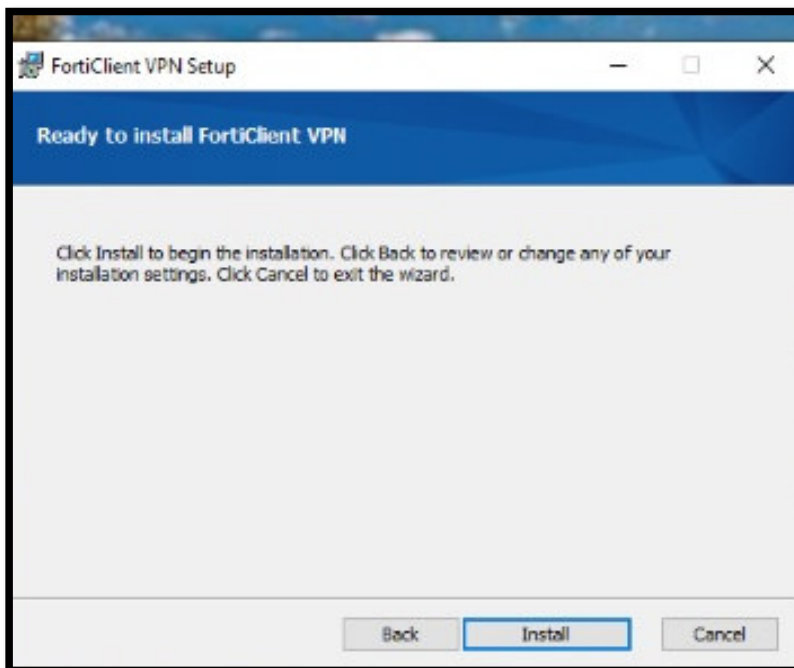
2. Install FortiClient on your device. Setup and click on **next**.



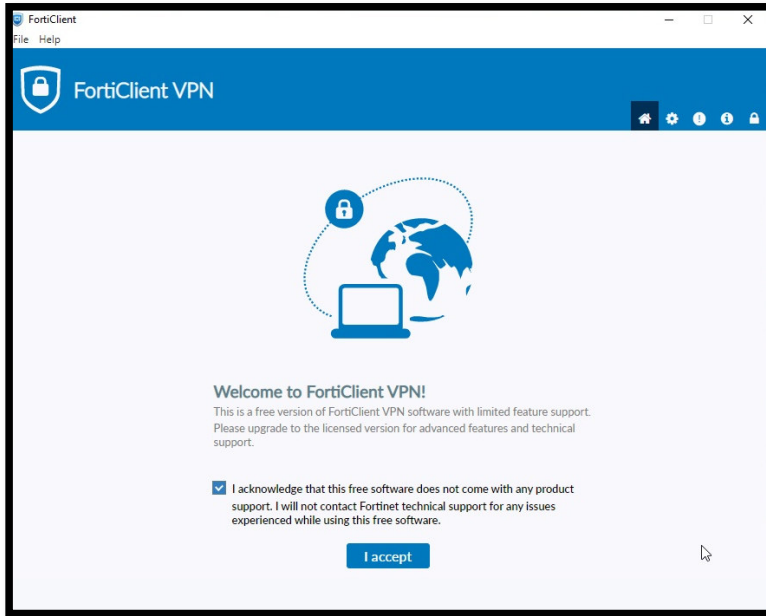
3. Keep the default installation path and click *next*.



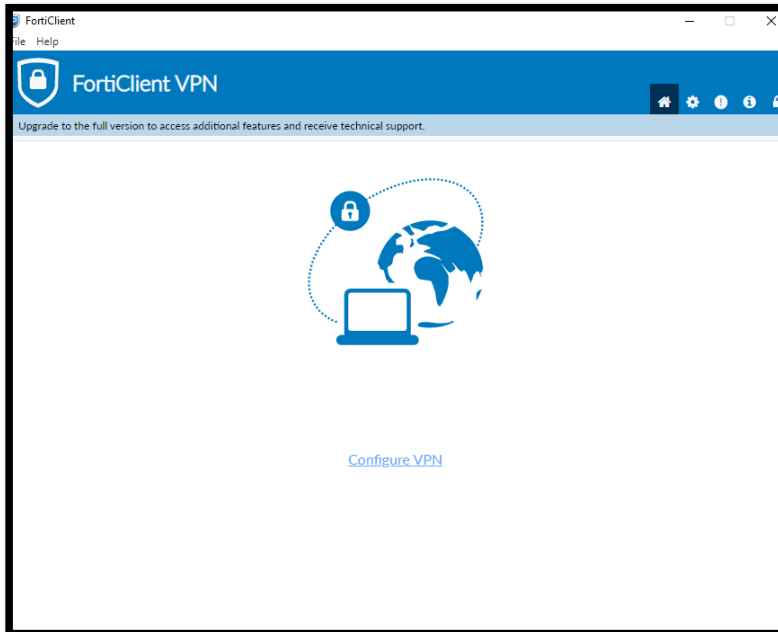
4. Click *install*



5. Start FortiClient VPN. You have to activate the checkbox and click on **"I accept"**.



6. After that click on **Configure VPN**.

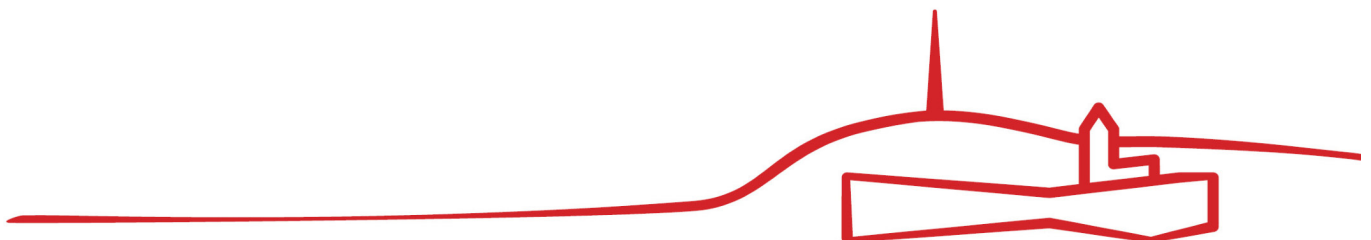


7. Enter a name of your choice for this VPN connection, i.e. MUV, in the field **Connection Name**. Copy the following URL <https://vpn.modul.ac.at/students> in the **Remote Gateway** field. Please activate the checkbox **Customize port** and set the **port 443**. Select **Save Login** in the Authentication section. Enter your student ID in the field **User Name** and click on **Save**.

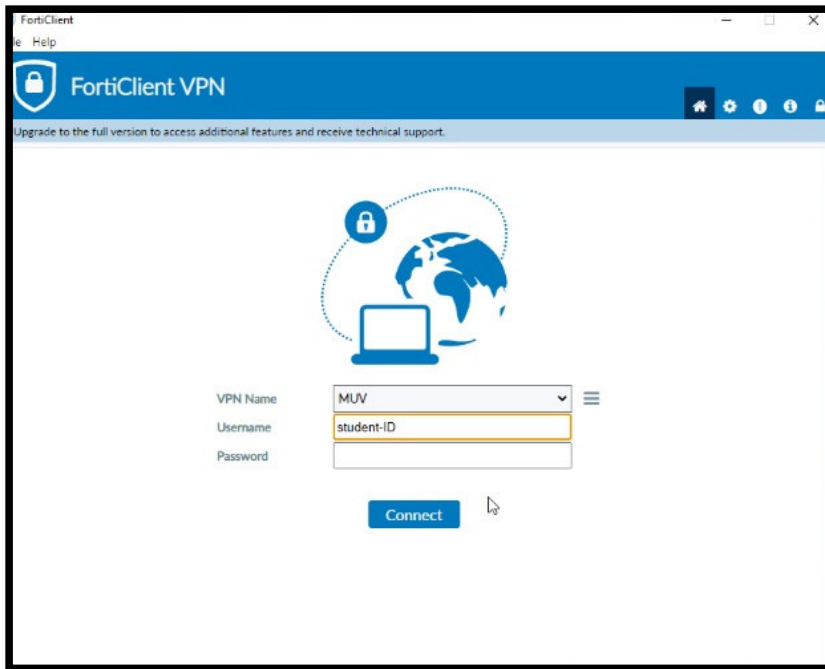
The screenshot shows the FortiClient VPN configuration window. The title bar reads 'FortiClient' with 'File' and 'Help' menus. The main window has a blue header with the FortiClient VPN logo and a notification to upgrade to the full version. The 'New VPN Connection' dialog is open, showing the following fields and options:

- VPN:** Three tabs: 'SSL-VPN' (selected), 'IPsec-VPN', and 'XML'.
- Connection Name:** Text box containing 'MUV'.
- Description:** Empty text box.
- Remote Gateway:** Text box containing 'https://vpn.modul.ac.at/students' with a close icon (x) on the right. Below it is a '+Add Remote Gateway' button.
- Customize port:** A checked checkbox next to a text box containing '443'.
- Enable Single Sign On (SSO) for VPN Tunnel:** An unchecked checkbox.
- Client Certificate:** A dropdown menu set to 'None'.
- Authentication:** Two radio buttons: 'Prompt on login' (unchecked) and 'Save login' (checked).
- Username:** An empty text box with a yellow border.
- Enable Dual-stack IPv4/IPv6 address:** An unchecked checkbox.

At the bottom of the dialog are two buttons: 'Cancel' and 'Save'.



8. Enter your **MU Email Password in the Password field** and click on **Connect**.



Well done! Now you should be connected to MU's network and able to access library resources off campus via <https://www.modul.ac.at/student-life/library>

In case of any questions please contact support@modul.ac.at

